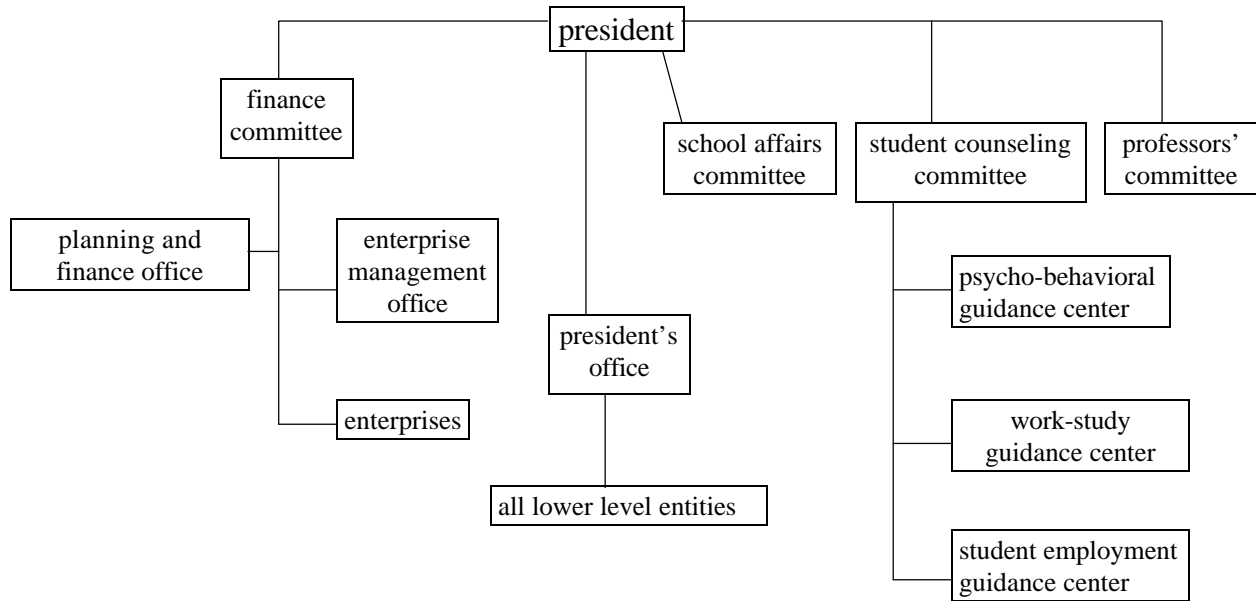


Figure 7.2: Organization under Luo Zhengqi⁴⁹



Note: The following entities reported to the president through the president's office: academic departments, institutes, library, computer center, audio-visual center, social sciences dept., physical education dept., part-time work-study institute, adult education dept., academic affairs office, personnel office, development construction office, equipment supply, examine committee, external programs, university journal, publishing and editorial center, general services company, management information office, academic services office, security and environmental protection, and the liaison office (Hong Kong).